

4

3

2

1

ITEM NO.	PART NO.	DESCRIPTION	QTY.	SUPPLIER	EXTERNAL ID	COMMENTS
1	20078	shock top cap	1	Starway Manufactured	-	Glass Bead Blast & Anod
2	20079R	shock housing	1	Starway Manufactured	-	40 x 36 Class H7 Honed
3	20080	N2 piston	1	Starway Manufactured	-	
4	20081	shock lower cap	1	Starway Manufactured	-	glass bead blast & anodi
5	20083	shock compression control valve	1	Starway Manufactured	-	
6	20084	shock lower body	1	Starway Manufactured	-	glass bead blast & anodi
7	20085	shock piston rod	1	Starway Manufactured	-	9/16" OD x 0.125" 316 S
8	20086	shock spring load ring	1	Starway Manufactured	-	glass bead blast & anodi
9	20087	shock spring lock ring	1	Starway Manufactured	-	glass bead blast & anodi
10	20088	shock stop	1	Starway Manufactured	-	glass bead black & anod
11	20089	shock valve large support	1	Starway Manufactured	-	
12	20090	shock valve small support	1	Starway Manufactured	-	
13	20092	shock piston	1	Starway Manufactured	-	
14	20091	shock piston stop	1	Starway Manufactured	-	
15	20093	Valve Disc 33 x 12.1 x .3	2			
16	20094	Valve Disc 24 x 12.1 x 0.2	3			
17	20095	shock seat lock	6	Starway Manufactured	-	glass bead blast & anodi
18	20096	shock valve seat	2	Starway Manufactured	-	
19	20097	Valve Disc 8.8 x 6.1 x .23	2			
20	20098	shock rebound control valve	1	Starway Manufactured	-	
21	20149	shock valve stem	1	Starway Manufactured	-	
22	20153	shock adjuster rod	1	Starway Manufactured	-	3.5mm OD 304/316 SS R
23	20154	shock adjuster tube	1	Starway Manufactured	-	8mm OD x 2mm 304/316
24	20155	shock compression adjuster	1	Starway Manufactured	-	
25	20156	shock rebound ajusters	1	Starway Manufactured	-	
26	20157	N2 retainer ring	1	Arcon	-	
27	20158	Piston Seal, Graphite Filled	1	Starway Manufactured	-	
28	RAWPP-51	10 d x 22 D steel spherical bearing	2	AST	GEBJ10S	
29	RAWPP-76	14 ID TU Sleeve Bearing	1	Isostatic	M1412TU	
30	RAWPP-77	14 ID x 22 OD wiper seal	1	123Bearing	RIA-14x22x3	
31	RAWPP-50	Int .875 in dia. x .042 invr bp	4	McMaster	90442A371	
32	RAWPP-333	M12 x 1 x 6 hex ss	1	McMaster	91938A160	
33	RAWPP-554	M14 x 1.25 x 7 hexn zn G4	1	McMaster	90326A202	
34	RAWPP-444	Air Fill Valve, Nickel-Plated Brass, NP	1	McMaster	8063K12	
35	RAWPP-445	O-Ring, 2.5 mm Wide, 38 mm ID	1	USA Sealing	ZUSAH2.5X38	
36	RAWPP-446	O-Ring, 5 mm Wide, 25 mm ID	1	USA Sealing	ZUSAH5X25	
37	RAWPP-447	O-Ring, 3.5 mm Wide, 28 mm ID	1	USA Sealing	ZUSAH3.5x28	
38	RAWPP-448	O-Ring, -015	2	USA Sealing	ZUSAH70015	
39	RAWPP-449	O-Ring, 1 mm Wide, 3 mm ID	1	USA Sealing	ZUSAH1X3	
40	RAWPP-450	O-Ring, 1.5 mm Wide, 6 mm ID	1	USA Sealing	ZUSAH1.5X6	
41	RAWPP-451	O-Ring, 1 mm Wide, 6 mm ID	1	USA Sealing	ZUSAH1X6	
42	RAWPP-452	O-Ring, 1 mm Wide, 2 mm ID	1	USA Sealing	ZUSAH1X2	

PROPRIETARY AND CONFIDENTIAL

THE INFORMATION CONTAINED IN THIS DRAWING IS THE SOLE PROPERTY OF DAMZ INC. ANY REPRODUCTION IN PART OR AS A WHOLE WITHOUT THE WRITTEN PERMISSION OF DAMZ INC IS PROHIBITED.

NAME

DATE

10/21/21

5/9/22

TITLE:

shock

SIZE

DWG. NO.

REV

34100

E

SCALE: 1:2

WEIGHT: 1.17

SHEET 1 OF 4

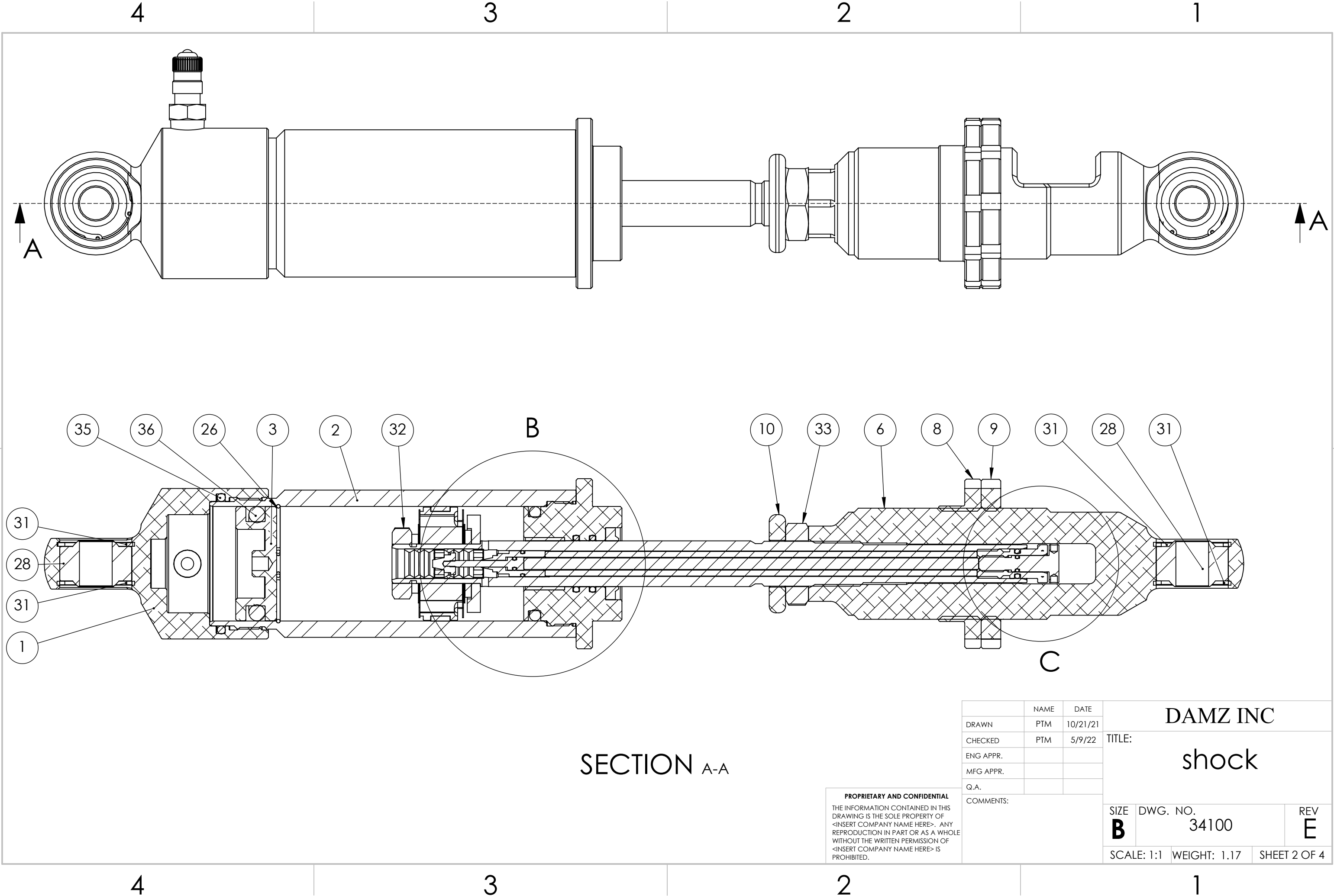
DAMZ INC

4

3

2

1



SECTION A-A

**PROPRIETARY AND CONFIDENTIAL**  
THE INFORMATION CONTAINED IN THIS  
DRAWING IS THE SOLE PROPERTY OF  
<INSERT COMPANY NAME HERE>. ANY  
REPRODUCTION IN PART OR AS A WHOLE  
WITHOUT THE WRITTEN PERMISSION OF  
<INSERT COMPANY NAME HERE> IS  
PROHIBITED.

	NAME	DATE	DAMZ INC		
DRAWN	PTM	10/21/21	TITLE:  shock		
CHECKED	PTM	5/9/22			
ENG APPR.					
MFG APPR.					
Q.A.					
COMMENTS:			SIZE <b>B</b>	DWG. NO. 34100	REV <b>E</b>
			SCALE: 1:1	WEIGHT: 1.17	SHEET 2 OF 4

4

3

2

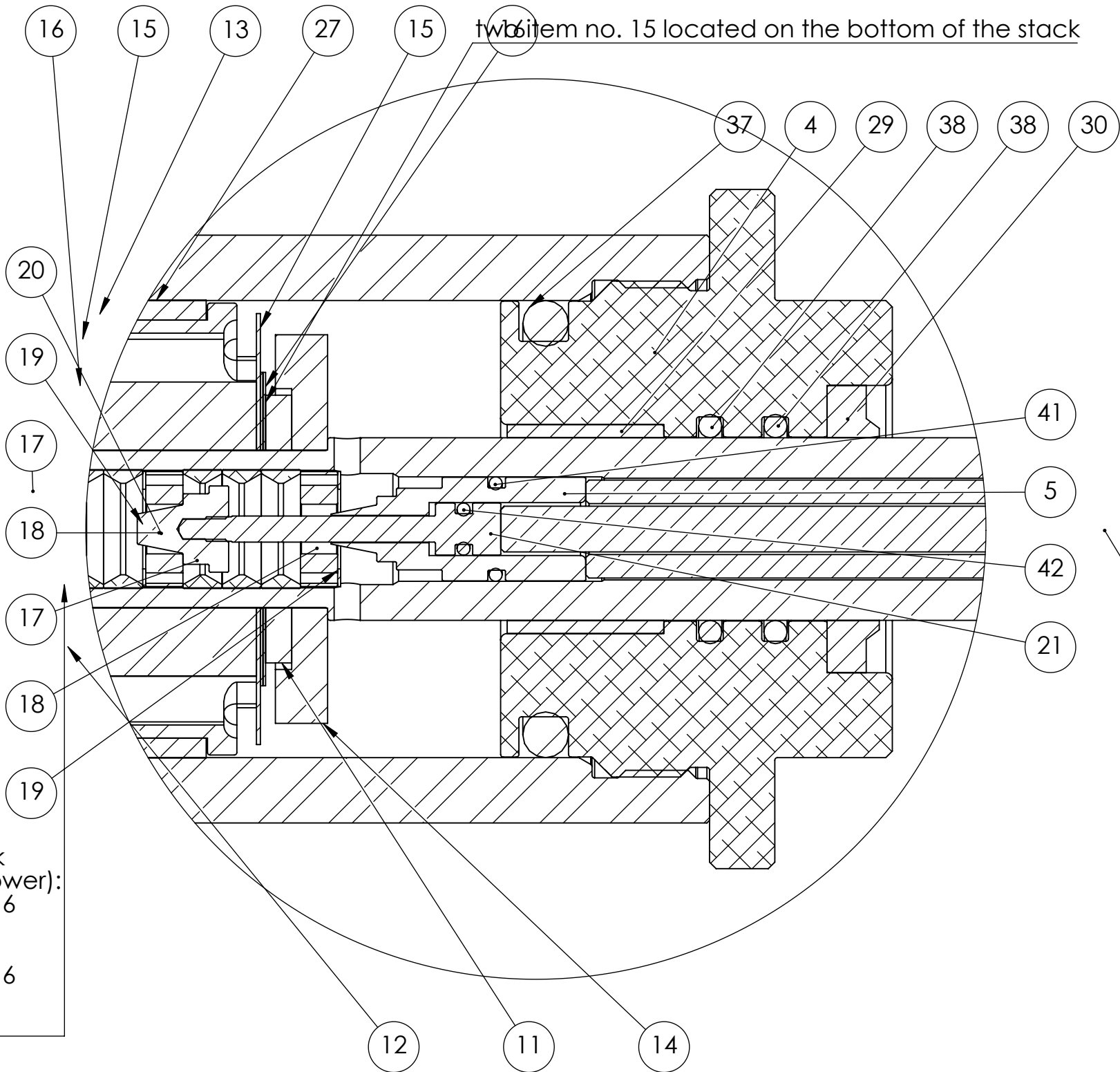
1

B

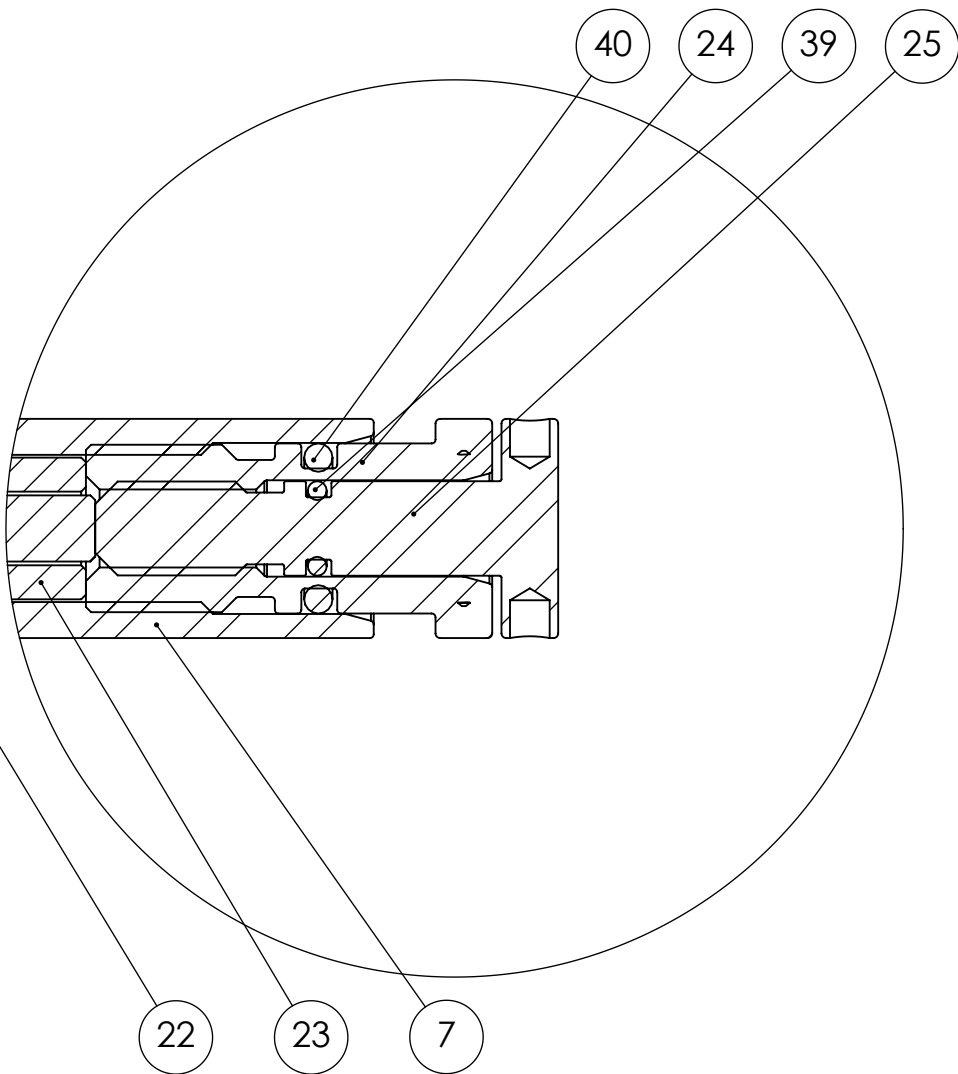
B

A

A



DETAIL B  
SCALE 5 : 2



**PROPRIETARY AND CONFIDENTIAL**  
THE INFORMATION CONTAINED IN THIS  
DRAWING IS THE SOLE PROPERTY OF  
DAMZ INC. ANY  
REPRODUCTION IN PART OR AS A WHOLE  
WITHOUT THE WRITTEN PERMISSION OF  
DAMZ INC IS  
PROHIBITED.

	NAME	DATE	DAMZ INC		
DRAWN	PTM	10/21/21	TITLE:  shock		
CHECKED	PTM	5/9/22			
ENG APPR.					
MFG APPR.					
Q.A.					
COMMENTS:			SIZE <b>B</b>	DWG. NO. 34100	REV <b>E</b>
			SCALE: 1:1	WEIGHT: 1.17	SHEET 3 OF 4

4

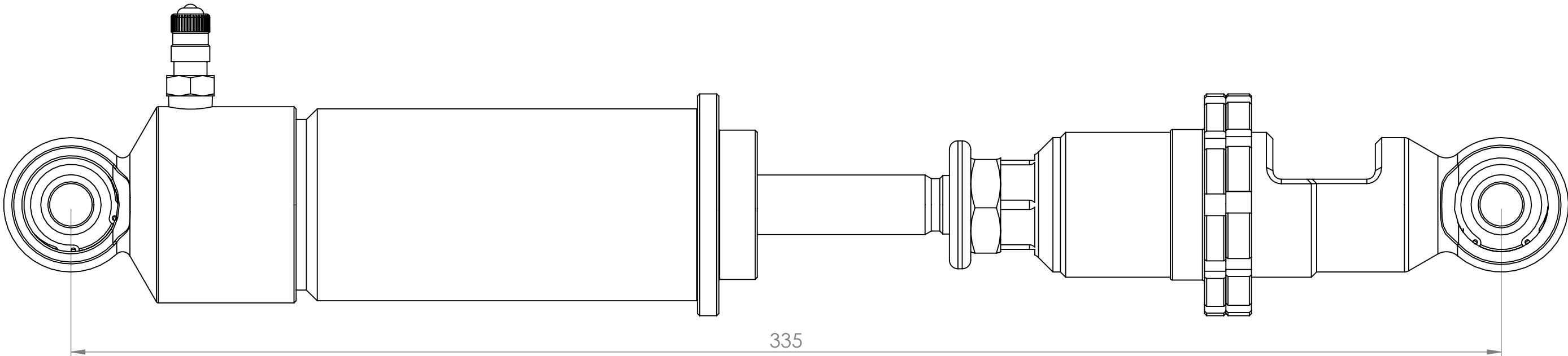
3

2

1

B

B

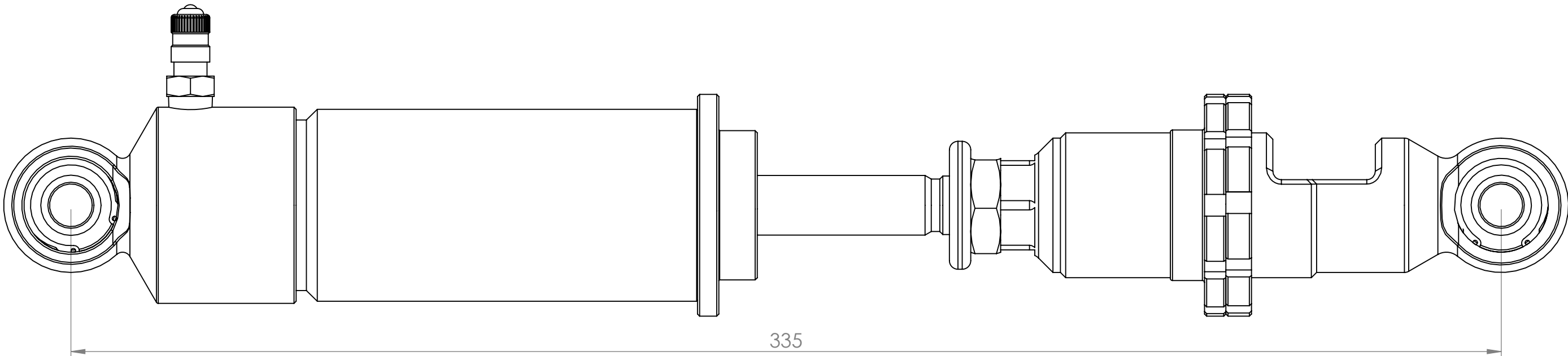


335

Front shock set length

A

A



335

Rear shock set length

4

3

2

1

	NAME	DATE	DAMZ INC  TITLE:  shock		
DRAWN	PTM	10/21/21			
CHECKED	PTM	5/9/22			
ENG APPR.					
MFG APPR.					
Q.A.			SIZE    DWG. NO.    REV <b>B</b> 34100 <b>E</b>		
COMMENTS:					
			SCALE: 1:1	WEIGHT: 1.17	SHEET 4 OF 4

PROPRIETARY AND CONFIDENTIAL  
THE INFORMATION CONTAINED IN THIS  
DRAWING IS THE SOLE PROPERTY OF  
DAMZ INC.. ANY  
REPRODUCTION IN PART OR AS A WHOLE  
WITHOUT THE WRITTEN PERMISSION OF  
DAMZ INC IS  
PROHIBITED.